

FITTING INSTRUCTIONS

Loadlimiter 63M Ultra Integral Surge Kit DBXSPM

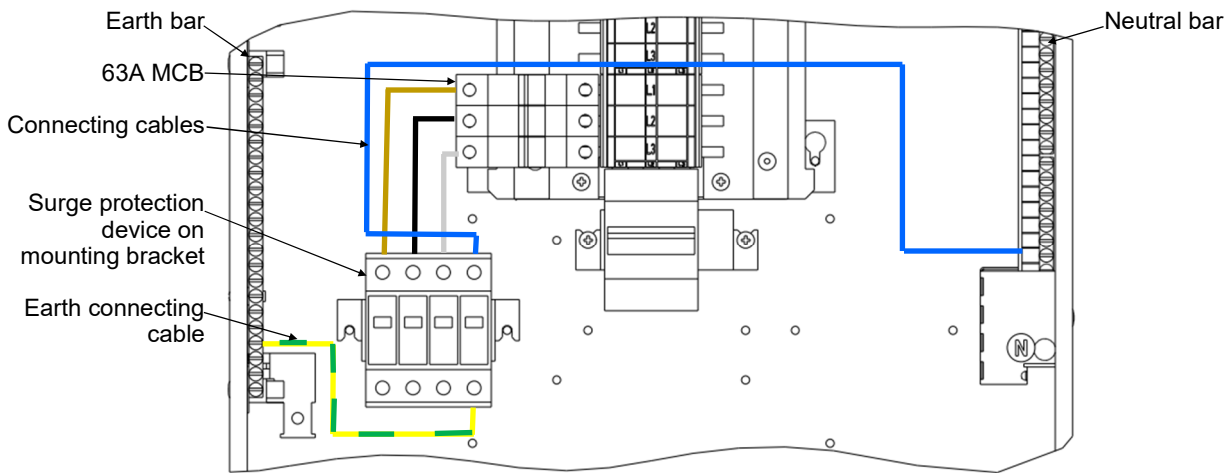


INSTALLATION AND OPERATION MUST BE IN ACCORDANCE WITH PUBLISHED DATA, INSTRUCTIONS AND DIAGRAMS AND WITH ANY RELEVANT NATIONAL AND LOCAL REGULATIONS.

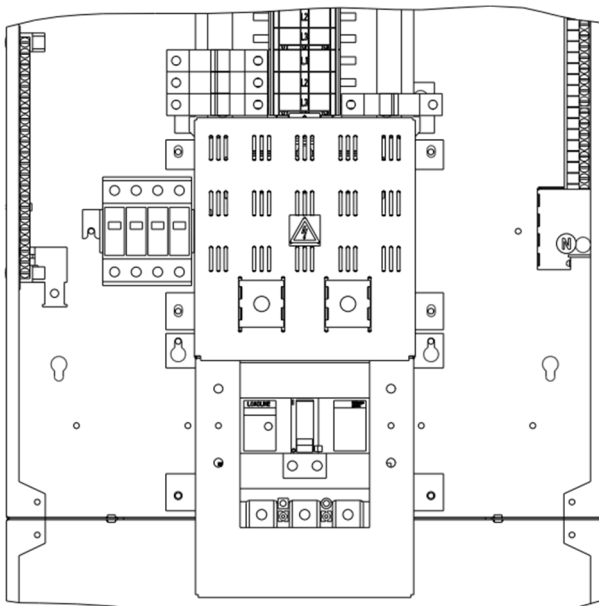
Storage prior to installation must be in clean, dry conditions.

General Installation Procedure

- 1) Assemble distribution board and incoming device as per instructions supplied with units.
- 2) Fasten the surge mounting bracket to the box to the left of the busbars as shown below.
- 3) Clip the DSPM3PN surge protection device (SPD) to the surge mounting bracket as shown below.
- 4) Connect the 63A MCB (supplied) to the bottom left position of the distribution board as per general distribution board instruction sheet.
- 5) Using the cables supplied and referring to the instructions that come with the SPD connect from the MCB to the device as shown below.
- 6) Connect the SPD neutral terminal to the lowest available hole of the right hand neutral bar of the distribution board using the neutral cable supplied
- 7) Connect the SPD bottom earth terminal to the lowest available hole of the left hand earth bar of the distribution board using the earth cable supplied.
- 8) Remove the left hand knockout of the distribution board front shield.
- 9) Ensure all connections are tight and then replace the distribution board front plate.



General arrangement with 125A switch disconnector incomer



Surge in same position for 250A MCCB incomer



General appearance with 125A switch disconnector incomer

While Dorman Smith Switchgear and its affiliates referenced herein have made every reasonable effort to ensure the accuracy of the information contained in this catalogue, Dorman Smith Switchgear cannot assure that this information is error free. For this reason, Dorman Smith Switchgear does not make any representation or offer any guarantee that such information is accurate, correct, reliable or current. Dorman Smith Switchgear reserves the right to make any adjustments to the information at any time. Dorman Smith Switchgear expressly disclaims any implied warranty regarding the information contained herein, including, but not limited to, the implied warranties of merchantability or fitness for a particular purpose. Dorman Smith Switchgear only obligations are those stated in Dorman Smith Switchgear Standard Terms and Conditions of Sale. Dorman Smith Switchgear will in no case be liable for any incidental, indirect or consequential damages arising from or in connection with, including, but not limited to, the sale, resale, use or misuse of its products. Users should rely on their own judgement to evaluate the suitability of a product for a certain purpose and test each product for its intended application. Dorman Smith is a trademark.