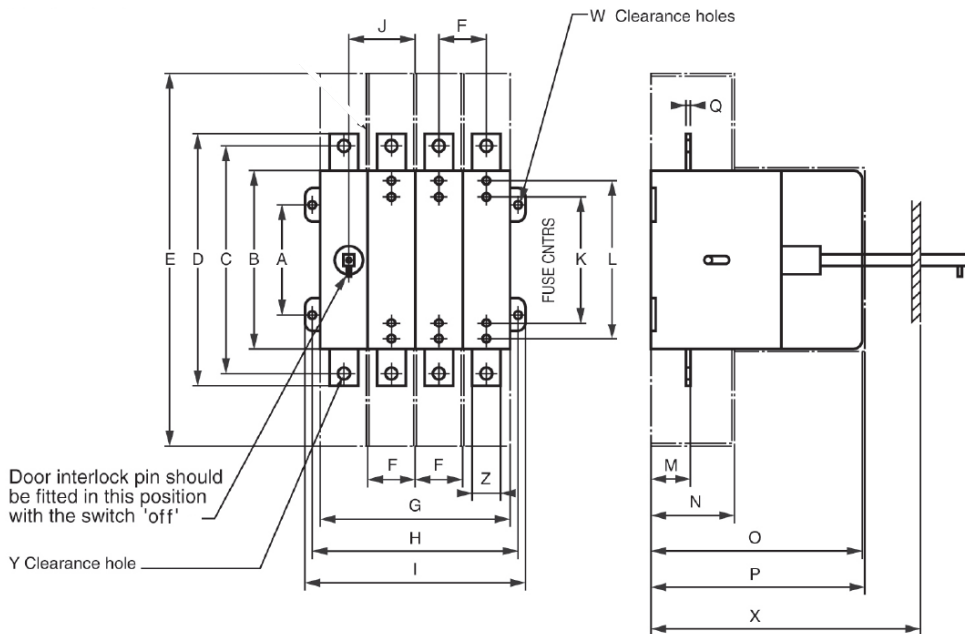


LOADSWITCH 63A SKELETON FUSE COMBINATION UNIT

Catalogue Number	SF3P63N	SF4P63
Main Features		
Relevant Standards	EN 60947-3	
Current Rating	63A	
Poles	TP&N	4P
Short Circuit Capacity (Fused)	80kA rms	
Rated voltage	415V AC	
Utilisation Category	AC23A	
Mechanical Endurance	10,000	
kW at 415V AC	30	
Weight	6kg	
Cables		
Terminal Type	M8 clearance hole	
Maximum Cable*	4C 70mm ²	
Maximum Cable Lug Palm Width (mm)	22	
Lug Fixing Screws Supplied	No	
Fuses		
Fuse type	BS88 ref A2/A3 Fuse Links Offset Tag Type	
Fuse equivalents	Lawson/GEC - TIA/TIS; Busmann - AAO/BAO	
Fuses Supplied	No	
Max Zs (5s disconnecting time, 240V, Lawson gG fuses BS88)	Rating (A)	6 10 16 20 25 32 40 50 63
	Zs (Ohms)	14 7.7 4.3 3.0 2.4 1.9 1.4 1.1 0.86
Accessories Cat No.s		
Solid Isolator Link (1 required per phase)	HFL63	
Castell** lock mounting kit	SCLK	
Terminal Shroud	N/A	
Terminal barriers (Set of 3)	SFTB	
Handle Assembly	SHA2	
Shaft Extension for 270mm Deep Panel	SXT127	
Shaft Extension for 600mm Deep Panel	SXT160	



A	B	C	D	E	F	G	H	I	J	K	L	M	N	O	P	Q	W	X	Y	Z
80	135	170	186	270	35	140	150	165	50	73	N/A	30	80	160	161	3	M5	170***	M8	20

*These figures are for guidance only.

** Castell is a trademark of Castell Safety International Limited. NOTE: Standard symbol DS1, special symbols are available direct from Castell**. Quote reference: Castell FS2 - Spigot 9.5mm square x 22.5mm, 65° anti-clockwise to trap key.

*** Supplied suitable for an X dimension of 220mm, the drive shaft can be cut down to give a minimum X dimension of 170mm