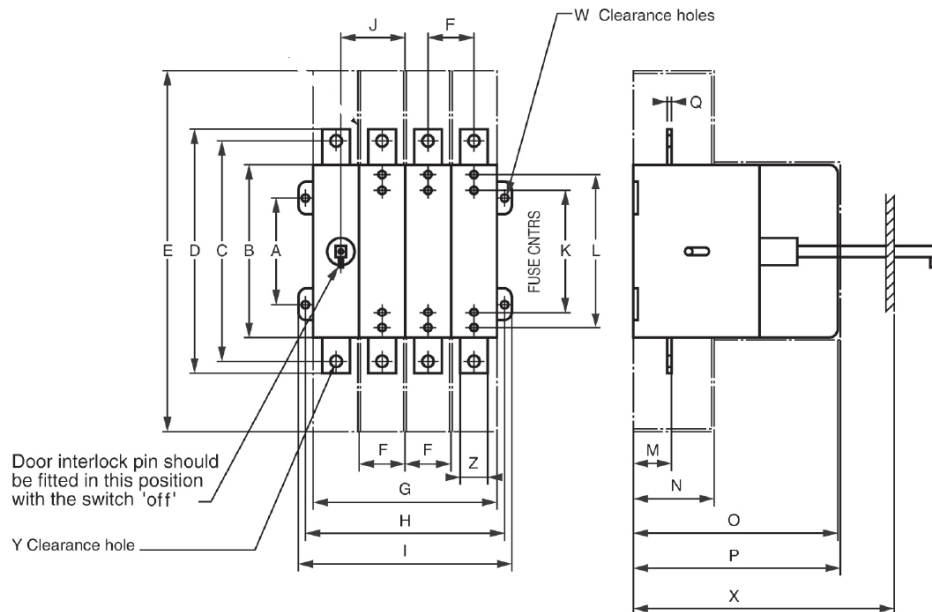


LOADSWITCH 315A SKELETON FUSE COMBINATION UNIT

Catalogue Number	SK3P315N	SK4P315
Main Features		
Relevant Standards	EN 60947-3	
Current Rating	315A	
Poles	TP&N	4P
Short Circuit Capacity (Fused)	80kA rms	
Rated voltage	415V AC	
Utilisation Category	AC23A	
Mechanical Endurance	8,000	
kW at 415V AC	160	
Weight	21kg	
Cables		
Terminal Type	M12 clearance hole	
Maximum Cable*	4C 185mm ² (240mm ² with terminal barriers fitted)	
Maximum Cable Lug Palm Width (mm)	35	
Lug Fixing Screws Supplied	No	
Fuses		
Fuse type	BS88 ref B1/B2/B3 Fuse Links Centre Tag Type	
Fuse equivalents	Lawson/GEC - TC/TF/TKF; Bussmann - CD/DD/ED	
Fuses Supplied	No	
Max Zs (5s disconnecting time, 240V, Lawson gG fuses BS88)	Rating (A)	80 100 125 160 200 250 315
	Zs (Ohms)	0.60 0.44 0.35 0.27 0.20 0.16 0.13
Accessories Cat No.s		
Solid Isolator Link (1 required per phase)	HLL400	
Castell** lock mounting kit	SCLK	
Terminal Shroud	SKTS	
Terminal barriers (Set of 3)	SKTB	
Handle Assembly (Standard Large Size)	SHA4	
Handle Assembly (Special Medium Size)	SHA3	
Shaft Extension for 270mm Deep Panel	SXT227	
Shaft Extension for 600mm Deep Panel	SXT260	



A	B	C	D	E	F	G	H	I	J	K	L	M	N	O	P	Q	W	X	Y	Z
60	180	220	250	384	52.5	210	220	235	90	111	N/A	45	87	210	212	5	M5	220	M12	35

*These figures are for guidance only.

** Castell is a trademark of Castell Safety International Limited. NOTE: Standard symbol DS1, special symbols are available direct from Castell**. Quote reference: Castell FS2 - Spigot 9.5mm square x 22.5mm, 65° anti-clockwise to trap key.