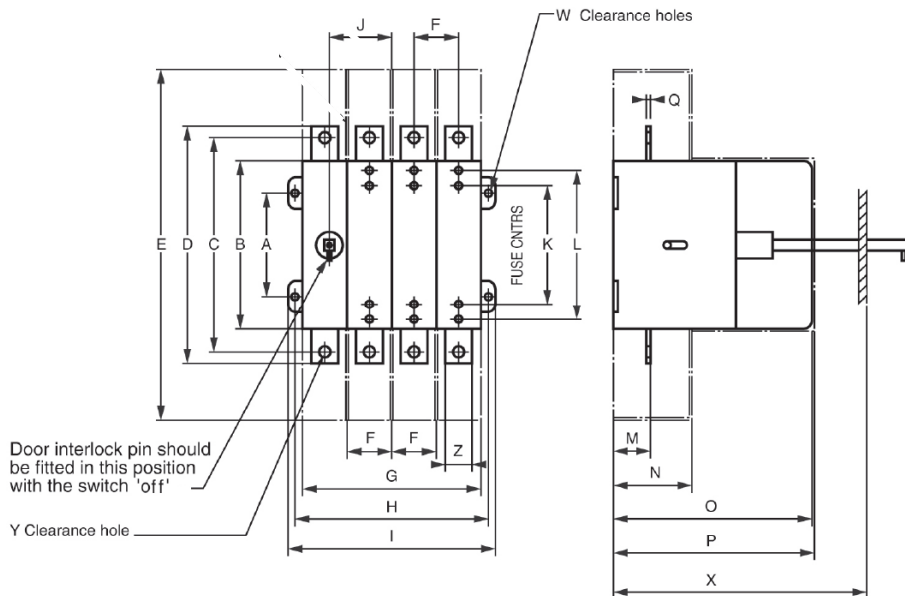


## LOADSWITCH 100/125A SKELETON FUSE COMBINATION UNIT

Catalogue Number	SF3P100N	SF4P100	SF3P125N	SF4P125									
<b>Main Features</b>													
Relevant Standards	EN 60947-3												
Current Rating	100A	100A	125A	125A									
Poles	TP&N	4P	TP&N	4P									
Short Circuit Capacity (Fused)	80kA rms												
Rated voltage	415V AC												
Utilisation Category	AC23A												
Mechanical Endurance	10,000	10,000	8,000	8,000									
kW at 415V AC	55	55	75	75									
Weight	6kg												
<b>Cables</b>													
Terminal Type	M8 clearance hole												
Maximum Cable*	4C 70mm <sup>2</sup>												
Maximum Cable Lug Palm Width (mm)	22												
Lug Fixing Screws Supplied	No												
<b>Fuses</b>													
Fuse type	BS88 ref A4 Fuse Links Offset Tag Type												
Fuse equivalents	Lawson/GEC - TCP/TFP; Bussmann - CEO/DEO												
Fuses Supplied	No												
Max Zs (5s disconnecting time, 240V, Lawson gG fuses BS88)	Rating (A)	6	10	16	20	25	32	40	50	63	80	100	125
	Zs (Ohms)	14	7.7	4.3	3.0	2.4	1.9	1.4	1.1	0.86	0.60	0.44	0.35
<b>Accessories Cat No.s</b>													
Solid Isolator Link (1 required per phase)	HFL200A												
Castell** lock mounting kit	SCLK												
Terminal Shroud	N/A												
Terminal barriers (Set of 3)	SFTB												
Handle Assembly	SHA2												
Shaft Extension for 270mm Deep Panel	SXT127												
Shaft Extension for 600mm Deep Panel	SXT160												



A	B	C	D	E	F	G	H	I	J	K	L	M	N	O	P	Q	W	X	Y	Z
80	135	170	186	270	35	140	150	165	50	94	N/A	30	80	160	161	3	M5	170**	M8	20

\*These figures are for guidance only.

\*\* Castell is a trademark of Castell Safety International Limited. NOTE: Standard symbol DS1, special symbols are available direct from Castell\*\*. Quote reference: Castell FS2 - Spigot 9.5mm square x 22.5mm, 65° anti-clockwise to trap key.

\*\*\* Supplied suitable for an X dimension of 220mm, the drive shaft can be cut down to give a minimum X dimension of 170mm