

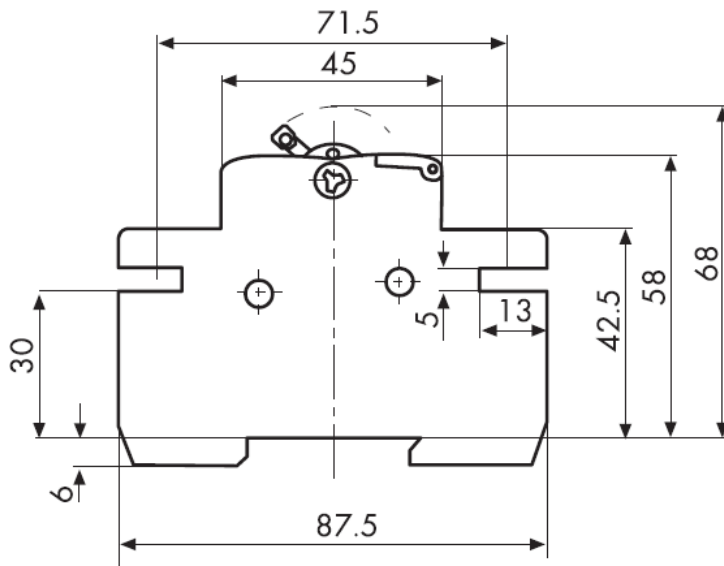
## LOADLIMITER 63 SWITCH DISCONNECTOR

### Main Features

- Meets the requirements of EN 60947-3
- Maximum cable termination capacity is 50mm<sup>2</sup>
- Utilization category of AC22
- Maximum terminal torque 2.5Nm

### CATALOGUE NUMBERS

Current Rating (A)	No. of Poles	Product Code
100	2	AV2100
100	3	AV3100
100	4	AV4100
125	2	AV2125
125	3	AV3125
125	4	AV4125



MCBs are modular. Double Pole width = 36mm,  
Triple Pole = 54mm & 4 Pole = 72mm

### Technical data

Rated voltage	2P - 400V AC, 48V DC, 3P & 4P - 400V AC
Rated insulation voltage	AC: 1000v; DC: 1500V
Rated impulse withstand voltage	4kV
Utilisation category	AC-22B; DC-22B
Rated frequency	50/60Hz
Rated short time withstand current I <sub>cw</sub>	1500A/1s
Rated short-circuit making capacity	2200A peak
Rated conditional short-circuit current	4kA (with 100A fuse)/ 2.5kA (with 125A fuse)
Rated making capacity	400A
Rated breaking capacity	320A
Degree of protection	IP20
Operating temperature	-25°C ... +55°C
Storage temperature	-40°C ... +70°C