

**FITTING INSTRUCTIONS FOR**  
**CASTELL LOCK KITS**  
**DRG A3202396**

**INSTALLATION DIAGRAMS OVERLEAF**

**(A) INSPECTION ON RECEIPT.** The following parts are supplied with initial castell lock kit:-

LOCKING PLATE-[F]	1 OFF	M6 x 12 SOCKET SCREW-[C]	1 OFF
LOCKING BRACKET-[G]	1 OFF	SPRING RETAINER-[J]	1 OFF
SECONDARY LOCKING PLATE-[L]	1 OFF	M4 x 8 COUNTERSUNK SCREW [M]	2 OFF
CASTING INSERT-[A]	1 OFF	M6 x 12 PAN HEAD SCREW-[E]	2 OFF
COUPLING-[B]	1 OFF	M6 LOCKING WASHER-[E]	2 OFF
LOCKING CAM ASSEMBLY-[H]	1 OFF	M6 LOCKNUT-[C],[E]	5 OFF

The following parts are supplied with each additional castell lock kit required:-

SPRING RETAINER-[J]	1 OFF
LOCKING CAM-[K]	2 OFF
M6 x 12 PAN HEAD SCREW-[E]	2 OFF
M6 LOCKING WASHER-[E]	2 OFF
M6 LOCKNUT-[E]	4 OFF

Storage prior to installation must be in clean dry conditions.

**(B) INSTALLATION PROCEDURE.**

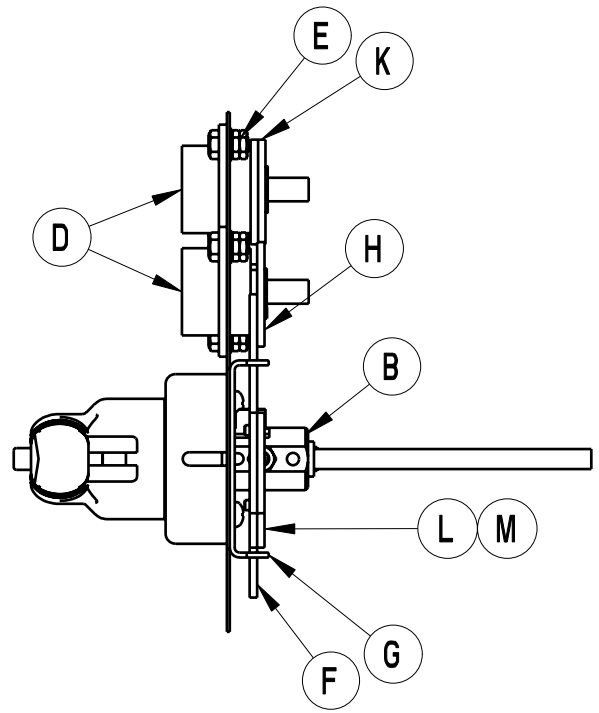
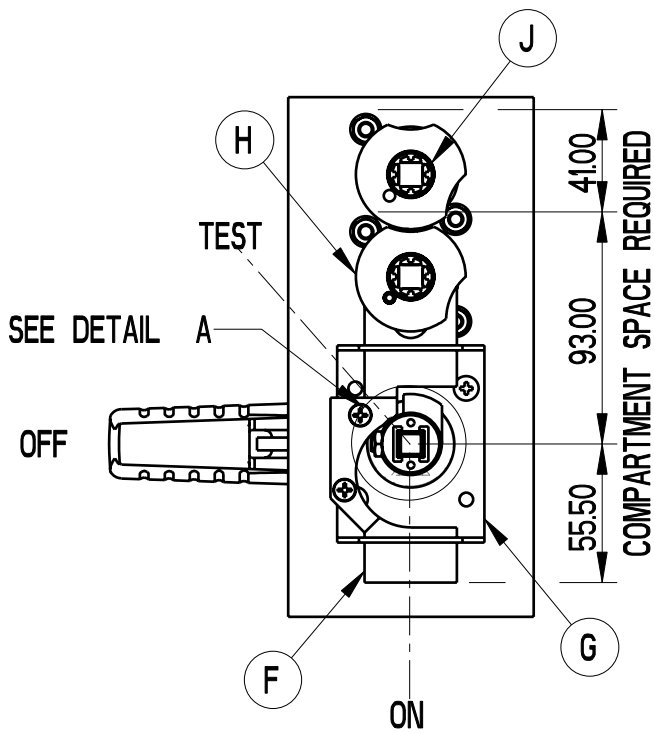
INSTALLATION AND OPERATION MUST BE IN ACCORDANCE WITH PUBLISHED DATA, INSTRUCTIONS AND DIAGRAMS AND WITH ANY RELEVANT NATIONAL AND LOCAL REGULATIONS.

1. Ensure supply is switched off.
  2. Remove handle and retain fixing screws.
  3. Drill door or cover plate as shown for required number of castell locks.
  4. 8mm shafts-locate casting insert [A] into coupling [B] and slide onto shaft. (See detail 'A')
  - 10mm shafts-discard casting insert [A] and slide coupling [B] onto shaft.
- Note:** Ensure that door interlock pin on shaft and the coupling are in the correct orientation as shown in detail 'A' when the switch is in the off position.

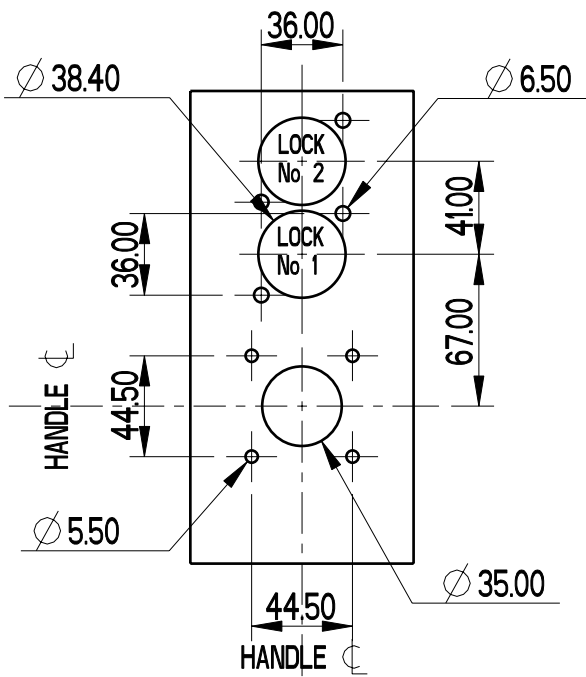
**Note:** Ensure the shaft protrudes through the door a maximum distance of 40mm to a minimum of 35mm.

5. Adjust coupling [B] until front face protrudes through the door by 3mm(+0/-1). Lock in place with M6 x 12mm socket screw & locknut [C].
6. Fit FS2 castell lock [D] using M6 x 12mm screws, lock washer & locknuts [E] ensure two locknuts are used with each screw.
7. Attach secondary locking plate [L] to locking plate [F] using M4 x 8 countersunk screws [M].
8. Slide locking plate [F] into locking bracket [G] and secure using handle fixing screws onto door and attaching handle simultaneously. Ensure that end of locking plate [F] locates over castell lock shaft.
9. Slide locking cam assembly [H] over castell lock shaft, locating pin in locking plate.
10. Secure locking cam assembly with push on retainer [J].
11. Secure each additional FS2 castell lock [D] as shown with M6 x 12mm screws, lock washer & locknuts [E] provided.
12. Slide two locking cams [K] over castell lock shaft and secure with push on retainer [J]

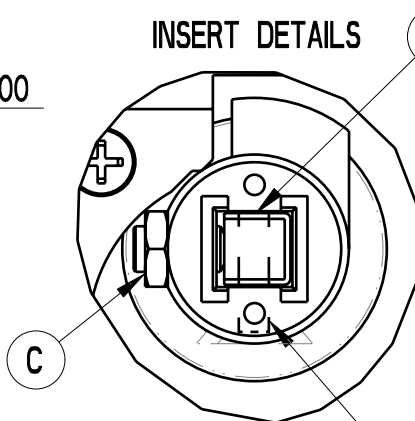
INSIDE VIEW OF DOOR



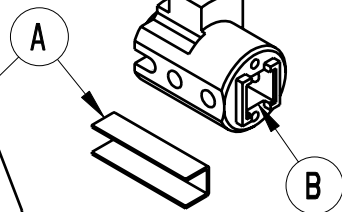
OUTSIDE VIEW OF DOOR



DRILLING DETAILS



INSERT DETAILS



DETAIL A  
SCALE 1.000

DOOR INTERLOCK PIN  
SWITCH IN "OFF" POSITION

HANDLE REMOVED  
SHOWING SHAFT AND  
COUPLING LOCATIONS

