



DORMAN
SMITH

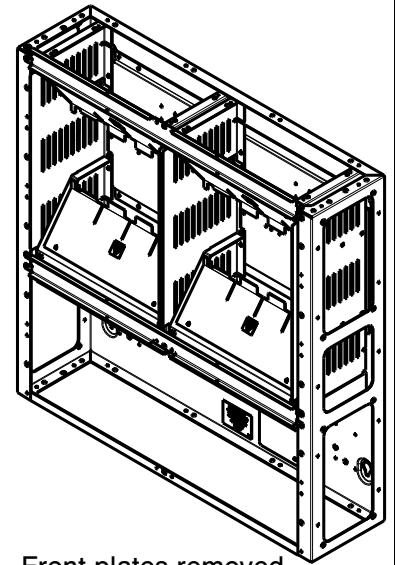
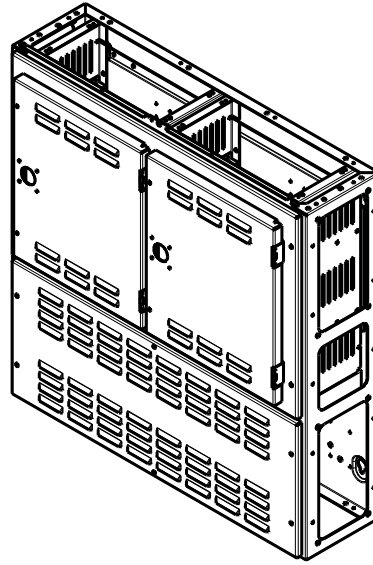
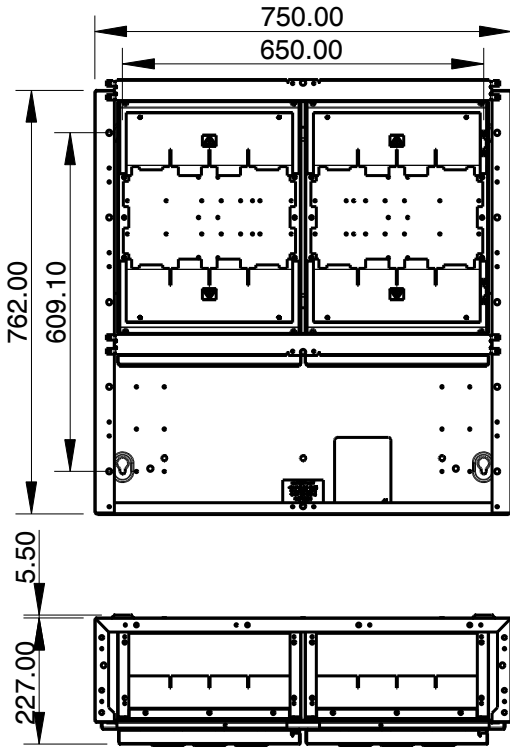
MHFS400X2

MODIS 12
ULTRA

HOUSING FOR 2 X 400A FUSE SWITCH

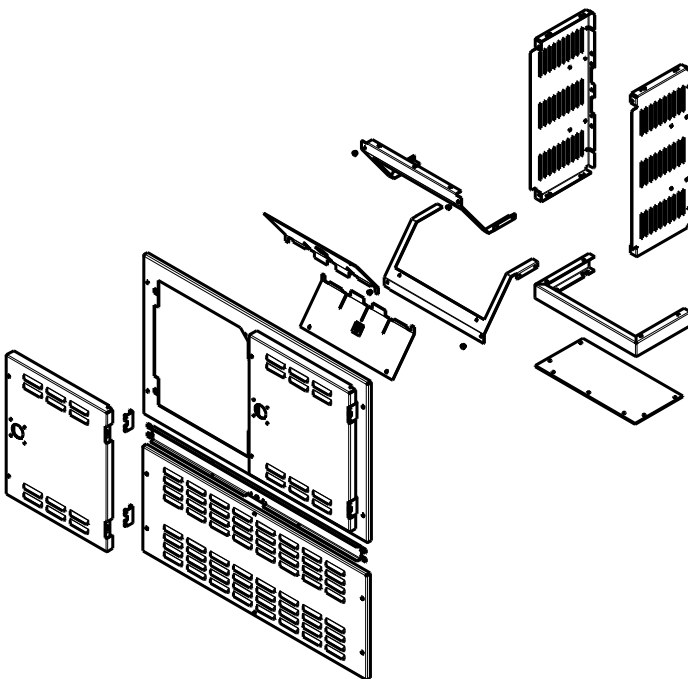
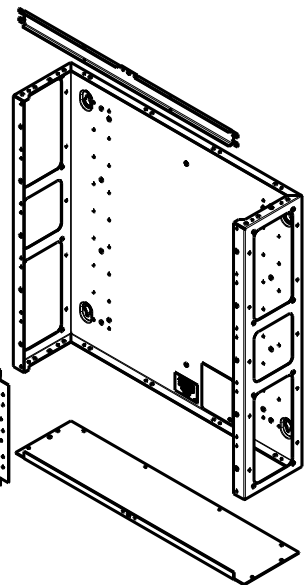
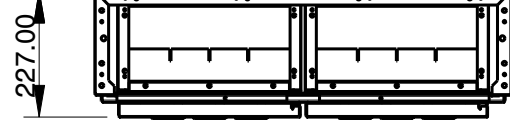
FITTING INSTRUCTIONS

SHEET 1 OF 2



Front plates removed
for clarity

NOTE:- Unit is shown as supplied.
Fuse switch and busbar connections
are supplied separately under catalogue
numbers shown on sheet 2.



TESTING AND COMMISSIONING

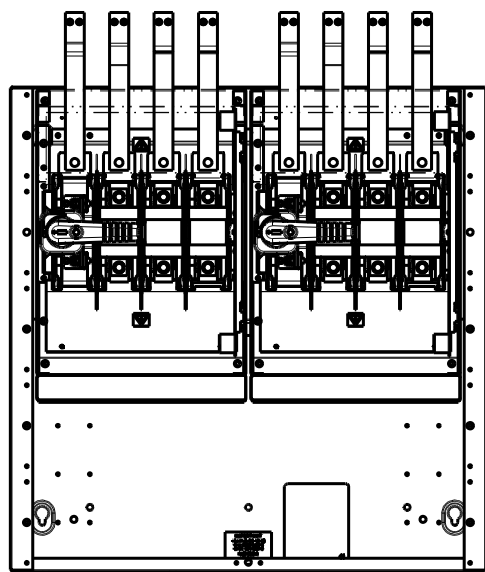
Before the unit and the installation of which it forms a part are commissioned they must be tested, in accordance with the requirements of the latest edition of the Requirements for Electrical Installations.

Installation and operation must be in accordance with published data, instructions and diagrams and any relevant national and local regulations

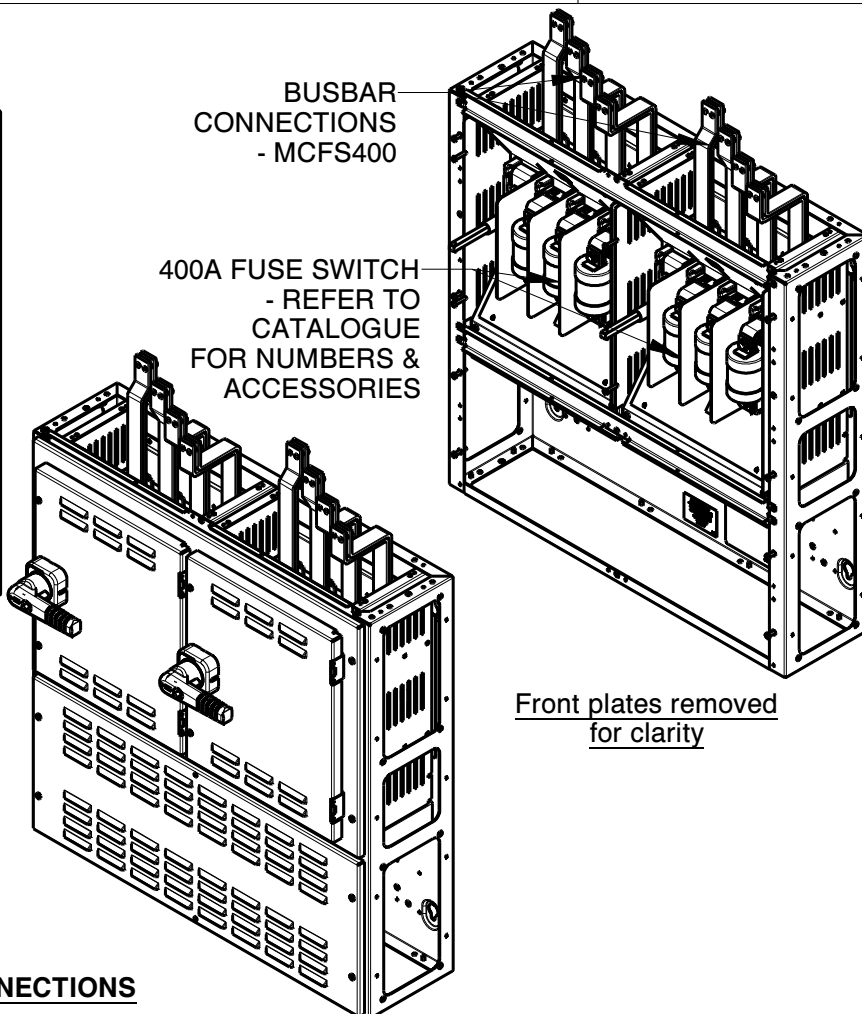
HOUSING FOR 2 X 400A FUSE SWITCH

FITTING INSTRUCTIONS

SHEET 2 OF 2



Front plates removed and shrouds dimmed for clarity



BUSBAR
CONNECTIONS
- MCFS400

400A FUSE SWITCH
- REFER TO
CATALOGUE
FOR NUMBERS &
ACCESSORIES

Front plates removed for clarity

FITTING FUSE SWITCH AND CONNECTIONS

NOTE: When mounted above the horizontal busbars, for top cable access, turn the unit upside down so that the switch mounting plate is closest to the busbars. Front plates can be refitted in their original orientation ie with louvres opening downwards.

- 1) Remove all front/end plates and shrouds and fix the unit to the wall using suitable bolts (not supplied).
- 2) Bolt the unit to the horizontal busbar housing using the M6 x 16 bolts and washers supplied in the cross strap fastener kit.
- 3) Mount the fuse switch to the mounting plate using the screws supplied with the connection kit.
- 4) Fit the connections between the fuse switch and busbars. Instructions and all fasteners are supplied with the kit.
- 5) Install incoming cables using appropriate cable glands and sockets. To avoid swarf and other foreign objects entering the enclosure always remove gland plates to cut cable / trunking entries.
- 6) Check the tightness of all connections and refit top and bottom shrouds.
- 7) Use the earth kit required to attach earth connection to either end of unit as required.
- 8) Refit cross straps and front plates. **NOTE:** Before fitting the front cover check the tightness of connections and ensure that all shrouds are correctly located and secured in place.

RECOMMENDED TORQUE FIGURES (unless otherwise stated)

SIZE	M5	M6	M8	M10	M12	M16
TORQUE Nm	5.5	9.5	17	28	45	91