

LOADBANK YB1 INSTALLATION INSTRUCTIONS

Surge Protection unit (PBSPT1 & PBSPT2)

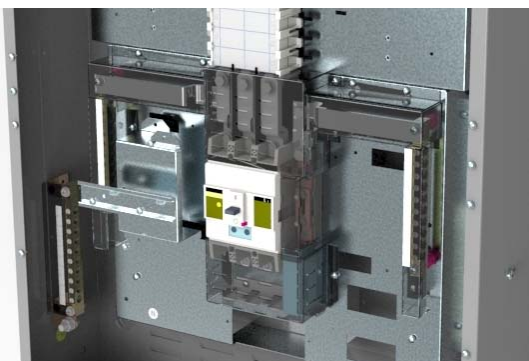
INSPECTION ON RECEIPT.

1 x Surge mounting plate	M5 Fasteners
1 x DIN rail	1 x Harness incl. Surge Unit
	1 x 63A TP YB1 MCCB
	1 x Terminal Shroud TP YB1 MCCB

INSTALLATION PROCEDURE.

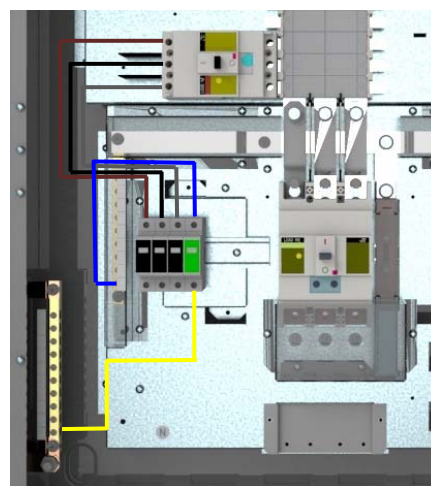
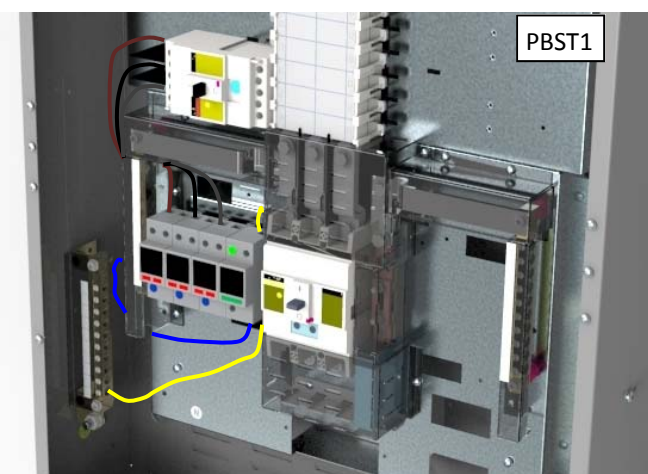
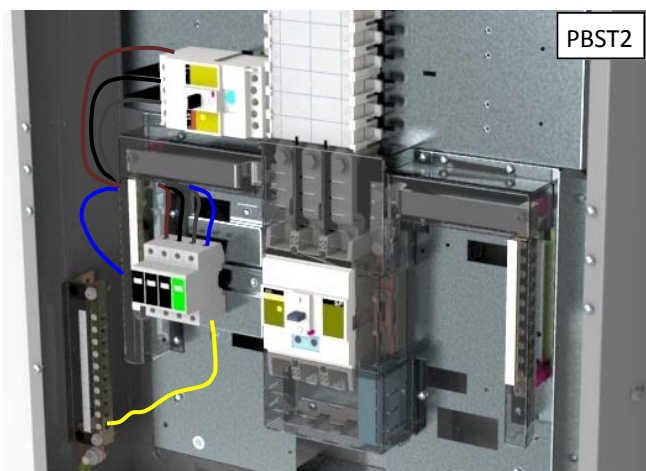
INSTALLATION AND OPERATION MUST BE IN ACCORDANCE WITH PUBLISHED DATA, INSTRUCTIONS AND DIAGRAMS AND WITH ANY RELEVANT NATIONAL AND LOCAL REGULATIONS.

Storage prior to installation must be in clean, dry conditions.

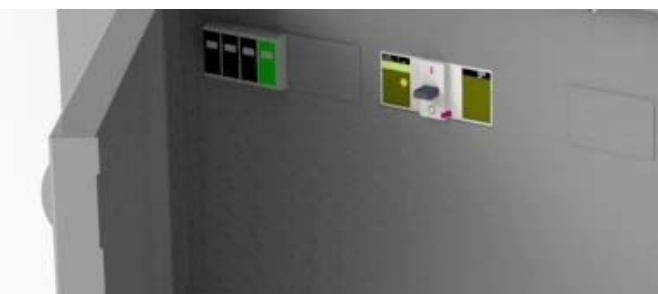


- 1) Remove front plate assemblies.
- 2) Fit the surge unit mounting plate to the LHS of the incomer mounting plate.
- 3) Fit the surge unit DIN rail to the mounting plate.

- 4) Mount the Surge Protection device on the DIN rail
DSPT to be mounted centrally
DSPM to be mounted to LHS of DIN rail
- 5) Mount the 63A MCCB in lower LHS position as shown.



- 6) Cable from the MCCB, Earth and neutral bars to the surge unit.
- 7) Fit the Terminal Shroud to the MCCB
- 8) If fitting:
DSPM, knock out the aperture on the LHS of the incomer front plate.
DSPT, knock out the full aperture.
- 9) Replace all front plates..



MAINTENANCE

Maintenance must be carried out by competent personnel **WITH THE SUPPLY ISOLATED.**

However no maintenance of this enclosure is required except for the periodic checking of the tightness of all electrical connections:-

All electrical connections should be correctly aligned, tightened and checked against the following torque figures:-

M4 – 1.35Nm **M5** – 5.5Nm **M6** – 9.5Nm **M8** – 17Nm **M10** – 28Nm **M12** – 45Nm **M16** – 91Nm

We recommend that you retain this sheet and store it with the panelboard for future reference.