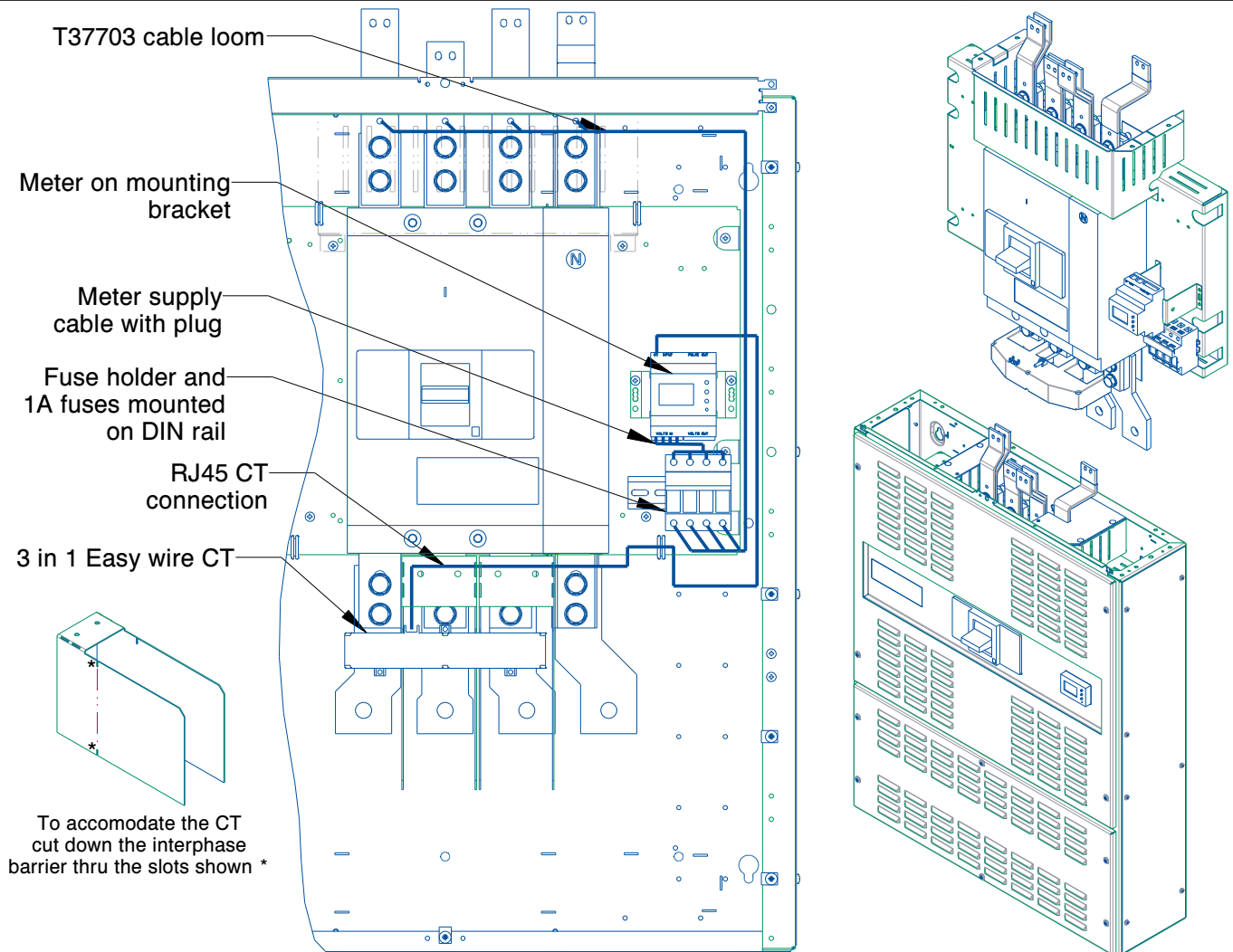


YA7 METER MOUNTING KIT

FITTING INSTRUCTIONS

SHEET 1 OF 1



Unit is assumed mounted in accordance with the instructions supplied with the unit and the required MCCB is fitted.

- 1) Remove all front plates and terminal/connection shrouds.
- 2) Fasten the smaller bracket supplied for the meter to the right of the MCCB as shown above using the M5 x 8 self tapping screws provided and clip the meter to it.
- 3) Fasten the DIN rail supplied for the fuse holder to the mounting plate below the meter using the M5 x 8 self tapping screws provided and clip the fuse holder, with fuses fitted, to it.
- 4) Fasten the CT to the copper extension terminals using the clamp screws provided and ensure P1 marking on the CT faces the source supply
- 5) Fit the meter supply cables loom T37703 from the holes in the busbar connections to the fuse terminal block using the M6 x 25 bolts & fasteners supplied.
- 6) Connect from the fuses to the meter using the supply cable with the plug attached
- 7) Connect CTs to meter using RJ45 cable
- 8) Ensure all connections are tight and then replace all shrouds using shroud grommets and cable fasteners to securely fix cable run.
- 9) Remove right hand knockout from the front plate and refit the front plate.

Refer to the instruction sheet supplied with the meter for set up details and additional meter information.

TESTING AND COMMISSIONING

Before the unit and the installation of which it forms a part are commissioned they must be tested, in accordance with the requirements of the latest edition of the Requirements for Electrical Installations.

Installation and operation must be in accordance with published data, instructions and diagrams and any relevant national and local regulations