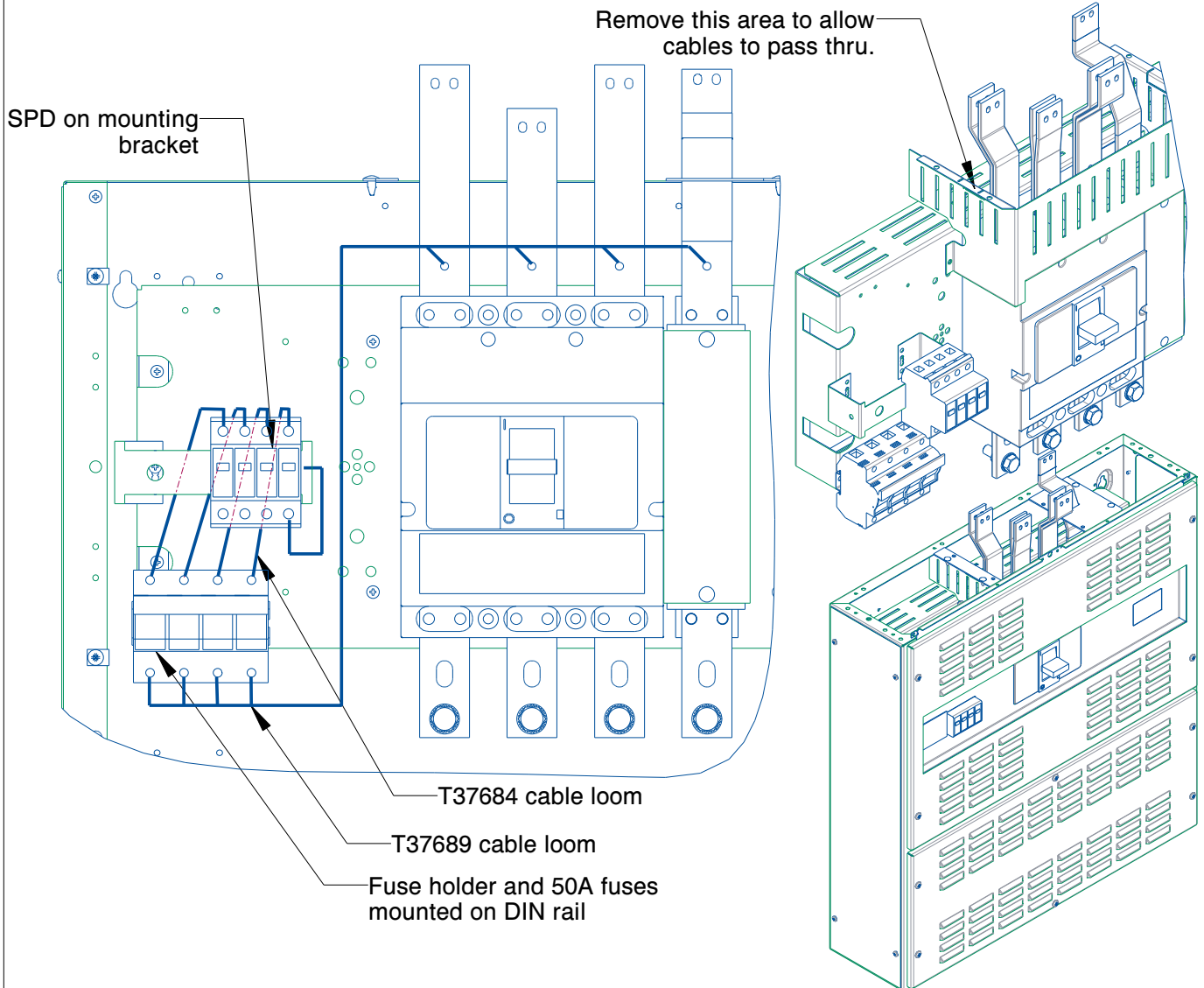


YA6 SURGE MOUNTING KIT FITTING INSTRUCTIONS

SHEET 1 OF 1



Unit is assumed mounted in accordance with the instructions supplied with the unit and the required MCCB is fitted

- 1) Remove all front plates and top and bottom terminal shrouds covering the MCCB terminals.
- 2) Fasten the bracket supplied for the surge unit to the left of the MCCB as shown above using the M5 x 8 self tapping screws provided and clip the DSPM3PN surge protection device (SPD) to it.
- 3) Fasten the DIN rail supplied for the fuse holder to the mounting plate as shown above using the M5 x 8 self tapping screws provided and clip the fuse holder, with 50A fuses fitted, to it.
- 4) Fit the switch to fuses cable loom kit T37689 from the holes in the busbar connections to the fuse terminal block using the M6 x 25 bolts & fasteners supplied, remove the area shown above from the top terminal shroud, to allow cable access.
- 5) Fit the fuses to SPD cable loom kit T37684 from the fuses to the SPD as shown whilst referring to the instructions supplied with the SPD
- 6) Connect the SPD earth terminal to the hole in the mounting bracket using the M6 fasteners and cable supplied.
- 7) Ensure all connections are tight and then replace all shrouds using shroud grommets and cable fasteners to securely fix cable run
- 8) Remove left hand knockout from the front plate and refit the front plate
- 9) Blank off space next to SPD with blanking piece supplied

TESTING AND COMMISSIONING

Before the unit and the installation of which it forms a part are commissioned they must be tested, in accordance with the requirements of the latest edition of the Requirements for Electrical Installations.

Installation and operation must be in accordance with published data, instructions and diagrams and any relevant national and local regulations