

# Loadbank

## Quick2Fit Metering System MP1 & MP1M Meters

### Panel Mounted Meters - Incoming and Outgoing

- Single and three-phase compatible
- Fully programmable Voltage and CT ratios
- True RMS measurement
- Pulse and Modbus as standard
- Import and Export energy
- RJ45 connection for easy CT connection
- MP1M meter is MID B&D Certified (for use as outgoing metering only)

Meter Type	Metering	Product Code
Quick2Fit 1 & 3 Phase Panel Mounted MID Multi-function Meter	Outgoing only	MP1M
Quick2Fit 1 & 3 Phase Panel Mounted Multi-function Meter	Incoming and Outgoing	MP1

### Single Current Transformers - Incoming

- Up to Class 0.5 accuracy
- System voltage up to 720V
- Secondary output to Meter of 5A
- Operating temperature of -20°C to +70°C
- Three single CTs required per incoming meter
- For use with Quick2Fit MP1M and MP1 Meters

Case Size	Current Rating	Incoming Device	Product Code
200A Single CT	200A	200A Fuse switch	M53J-200/5
250A Single CT	250A	250A YB3 MCCB	M53J-250/5
400A Single CT	400A	400A YA6 MCCB / 400A Fuse Switch	M63N-400/5
600A Single CT	600A	630A YA6 MCCB	M63N-600/5
800A Single CT	800A	800A YA7 MCCB	M63N-800/5
800A Single CT	800A	800A Fuse Switch	M93L-800/5

### 3-in-1 Current Transformers - Outgoing

- Class 1 to EN 60044-8 and EN 61869-2
- Secondary output to Meter of 330mV
- Sealable RJ45 connection
- Operating temperature of -25°C to +50°C
- One required per outgoing meter

Case Size	Current Rating (A)	Aperture size (mm)	Product Code	Outgoing Device Current Rating (A)
Quick2Fit 3-in-1 CT (105mm wide, 35mm phase centres)	60	25 x 21	RI-CT242-EW-060	0 – 63A
Quick2Fit 3-in-1 CT (105mm wide, 35mm phase centres)	100	25 x 21	RI-CT242-EW-100	63 - 100A
Quick2Fit 3-in-1 CT (105mm wide, 35mm phase centres)	125	25 x 21	RI-CT242-EW-125	80 – 125A
Quick2Fit 3-in-1 CT (105mm wide, 35mm phase centres)	200	25 x 21	RI-CT242-EW-200	160 – 200A
Quick2Fit 3-in-1 CT (105mm wide, 35mm phase centres)	250	25 x 21	RI-CT242-EW-250	160 – 250A

### Quick2Fit Metering Looms

- 1 x LBWRPL fused meter supply loom required per cableway for outgoing meters
- 1 x LBWRCT required for the incoming meter
- Meter to meter supply cable and RJ45 CT cable to be purchased separately for outgoing meters

Description	Product Code
Quick2Fit Meter Supply Loom c/w fuses	LBWRPL
Quick2Fit 5A CT Connection Loom c/w single CT to RJ45 adaptor	LBWRCT
Quick2Fit RJ45 CT Cable PVC 0.5m	TAS-RJ45CC0.50P
Quick2Fit RJ45 CT Cable PVC 1.0m	TAS-RJ45CC1.00P
Quick2Fit RJ45 CT Cable PVC 1.5m	TAS-RJ45CC1.50P
Quick2Fit Meter to Meter Supply Cable PVC 0.3m	TAS-F-MTMSC0.30
Quick2Fit Meter to Meter Supply Cable PVC 0.5m	TAS-F-MTMSC0.50
Quick2Fit Meter to Meter Supply Cable PVC 1.0m	TAS-F-MTMSC1.00

Please see our Metering Selection Chart for the Loadbank Panel Board Range

# Loadbank

## Quick2Fit Metering Selection Chart MP1 & MP1M Meters

### Step 1 Select cableways and cableway metering door kits

Cableways can be fitted to one or both sides of the board and incoming device enclosure, as per your cabling and metering requirements. If metering is required then please order a metering door kit to suit the cableway.

Panel board	Modular Height	Height (mm)	Cableway	Meter Door
LB406YA3 / LB806YA3	4	609	LECM4	LECMD4
LB412YA3 / LB812YA3	6	914	LECM6	LECMD6
LB418YA3 / LB818YA3	8	1219	LECM8	LECMD8
LF806A / LF806YA3	5	762	LECM5	LECMD5
LF810A / LF810YA3	8	1219	LECM8	LECMD8

Incoming Device Enclosure	Modular Height	Height (mm)	Cableway	Meter Door
LB1YA3 / LF1F2A	3	457	LECM3	LECMD3
LB1YA6 / LF1F4A	5	762	LECM5	LECMD5
LB1YA7 / LF1F8A	6	914	LECM6	LECMD6

### Step 2 Each Left or Right Hand cableway with meters requires: 1 x LBWRPL - Meter Supply Kit.

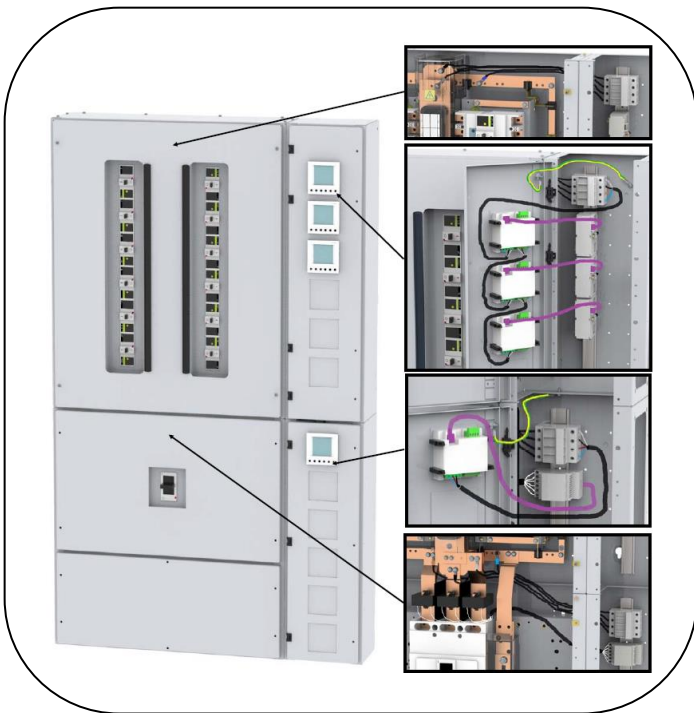
This can be connected to the incoming connections or to the top end of the busbars and contains connections and fuses for one meter. If the incoming meter is in the lower part of the board and the outgoing meters are towards the top (i.e. greater than 5 modules / 762mm away) we suggest using an additional LBWRPL to supply the incoming meter.

### Step 3 Select Outgoing Meter Type:

**MP1** – Quick2Fit Multi-function Panel Mount Meter OR **MP1M** – Quick2Fit Multi-Function Panel Mount MID meter

### Step 4 Each additional meter (not connected to LBWRPL) requires:

1 x **TAS-F-MTMS0.30** - 0.3m long meter to meter supply cable, which is suitable for meters in adjacent knockouts in cableway at maximum 120mm apart. If the meters are not installed in adjacent knockouts then a selection of longer meter to meter supply cables are available in 0.5 and 1 metre lengths - replace figure at end of catalogue item with number e.g. 0.50 is 0.5m. Please refer to previous page for full product codes.



### Step 5 Each outgoing meter also requires:-

- 1 x **TAS-RJ45CC0.50P** - CT to meter RJ45 connection
- 1 x 3-Phase CT either:-
  - RI-CT242-EW-060** for 0 - 63A outgoing device
  - RI-CT242-EW-100** for 63A - 100A outgoing device
  - RI-CT242-EW-125** for 80A - 125A outgoing device
  - RI-CT242-EW-200** for 160A - 200A outgoing device
  - RI-CT242-EW-250** for 160A - 250A outgoing device

### Step 6 Incoming meter also requires:-

- 1 x **LBWRCT** - CT connection kit
- 1 x **MP1** – Quick2Fit Multi-function Panel Mount Meter
- 3 x 5A secondary CTs either:-
  - M53J-200/5** for 200A Fuse switch
  - M53J-250/5** for 250A YB3 MCCB
  - M63N-400/5** for 400A YA6 MCCB/ Fuse switch
  - M63N-600/5** for 630A YA6 MCCB
  - M63N-800/5** for 800A YA7 MCCB
  - M93L-800/5** for 800A Fuse switch

# Loadbank

## Quick2Fit Metering Selection Chart MP1 & MP1M Meters

