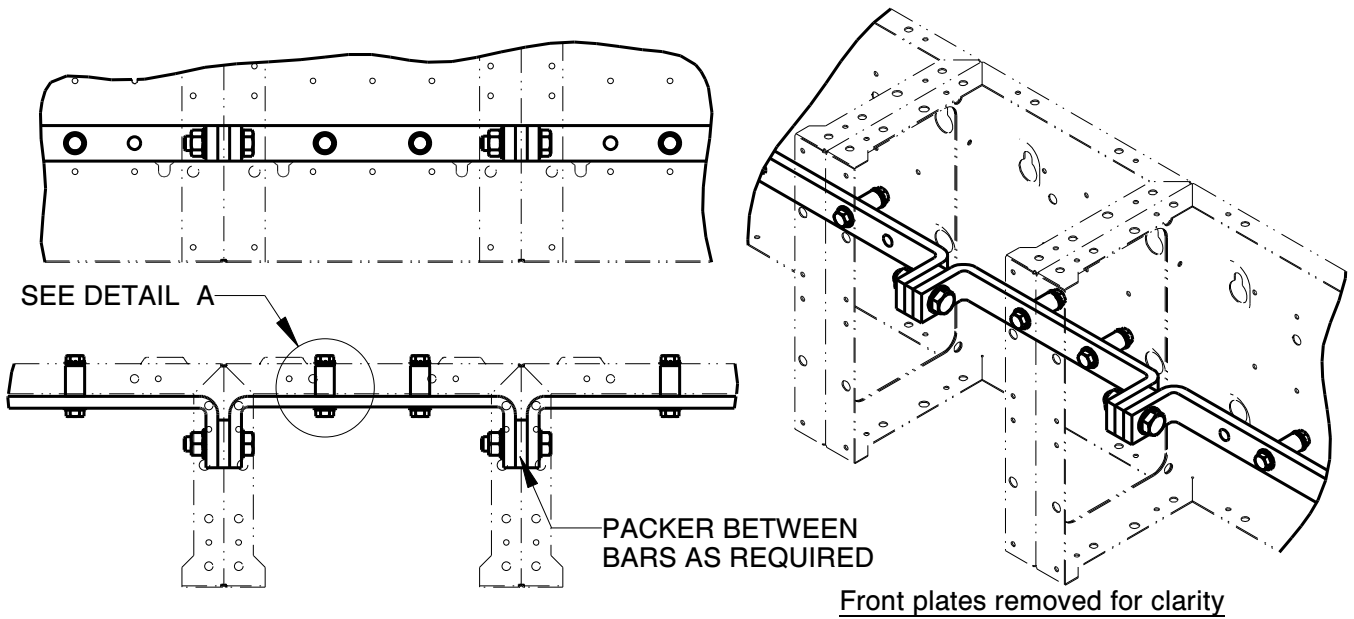


HORIZONTAL EARTH BARS
FITTING INSTRUCTIONS

SHEET 1 OF 1


Copper sizes

1 lamination of 30 x 10 copper

Notes:

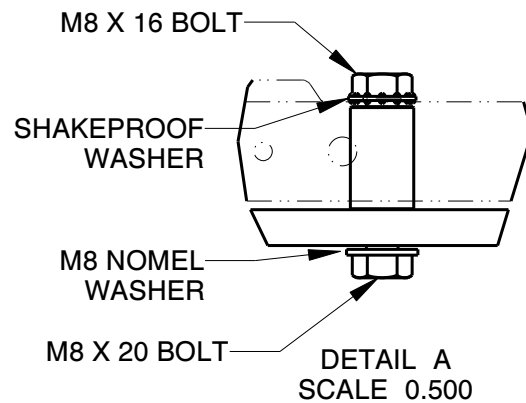
Before fixing the unit to the wall remove the required knockouts in the back of the enclosure.

Fasten the pillar to the back of the box using the shakeproof washer and M8 x 16 bolt as shown in detail A.

Fasten the earth bar to the pillar using the M8 x 20 bolt and nomel washer as shown.

If linking two busbars together use the supplied packer and M12 bolts as shown.

All required fasteners are supplied with the connection kit.



Before refitting front covers check the tightness of connections.

RECOMMENDED TORQUE FIGURES (unless otherwise stated)

SIZE	M5	M6	M8	M10	M12	M16
TORQUE Nm	5.5	9.5	17	28	45	91