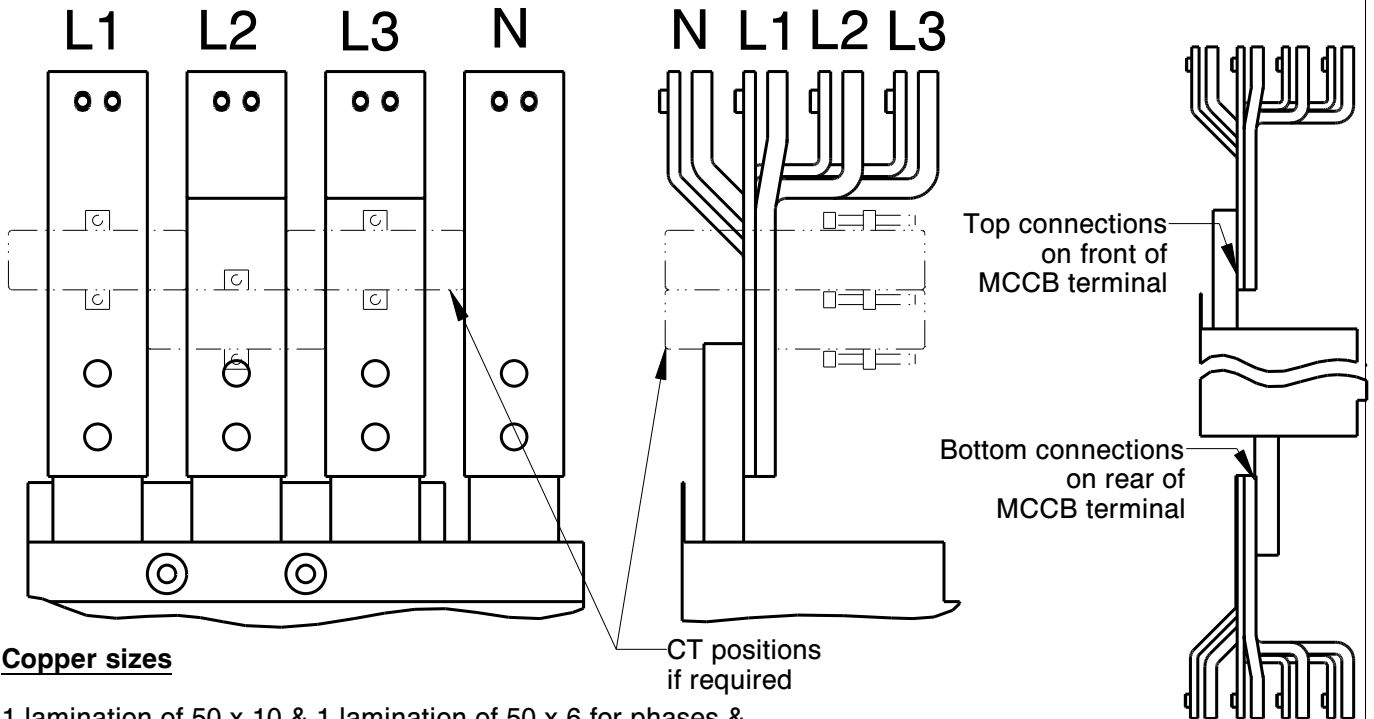


YA8 4 POLE MCCB CONNS, S TO HORIZONTAL BUSBAR
FITTING INSTRUCTIONS

SHEET 1 OF 1


Copper sizes

1 lamination of 50 x 10 & 1 lamination of 50 x 6 for phases & neutral

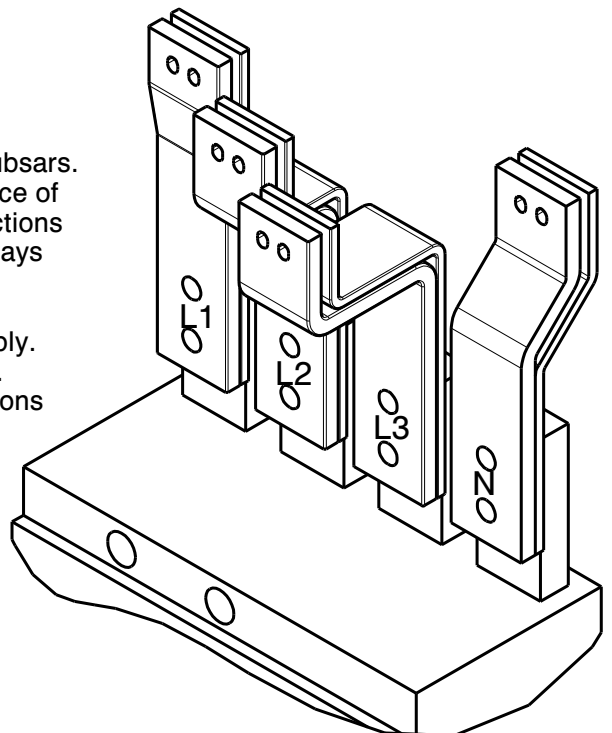
Notes:

Connections work with 4 pole MCCB only.
For TP MCCB with neutral link use connection kit MCYA8.

MCCB can be fitted either above or below the horizontal busbars. If fitted below the busbars the connections fit to the front face of the MCCB terminals. If fitted above the busbars the connections fit to the back face of the MCCB terminals. Connections always fix to the front face of the neutral link.

The busbar end is inserted for M6 bolts for ease of assembly. All required fasteners are supplied with the connections kit. Use the supplied phase label markers to mark the connections after fitting.

Interphase barriers must always be fitted to the top of the MCCB. Barriers are either supplied loose with the MCCB or as part of the shroud when incoming top. Before refitting shrouds and front covers check the tightness of all connections.



Installation and operation must be in accordance with published data, instructions and diagrams and any relevant national and local regulations

RECOMMENDED TORQUE FIGURES (unless otherwise stated)

SIZE	M5	M6	M8	M10	M12	M16
TORQUE Nm	5.5	9.5	17	28	45	91