

# Installation instructions

## Dorman Smith Loadbank Metering kits



### KITS:



Voltage tap-off connection to first meter  
(1 per cableway)  
**LBWRPL**



5A current transformer connections to meter  
(For incomer only)  
**LBWRCT**



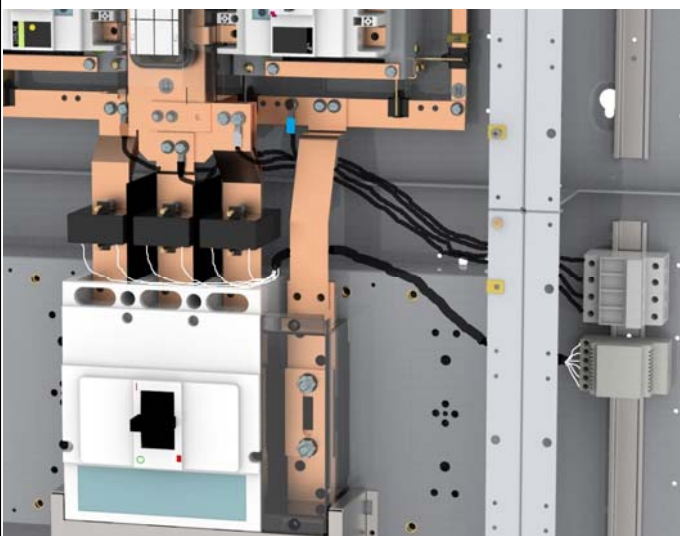
Meter to meter supply cable  
(1 off per additional meter) Meter knockouts are 120mm apart  
**TAS-F-MTMSC0.30** - 0.3m long (for meters in adjacent knockouts)  
**TAS-F-MTMSC0.50** - 0.5m long (for longer distances between meters)  
**TAS-F-MTMSC1.00** - 1.0m long (for longer distances between meters)



Current transformer cable (1 off per outgoing meter)  
**TAS-RJ45CC0.50P** - 0.5m long (for meters in knockout adjacent to CT)  
**TAS-RJ45CC1.00P** - 1.0m long (for longer distances from CT to meter)  
**TAS-RJ45CC1.50P** - 1.5m long (for longer distances from CT to meter)



### Incomer Meter Installation



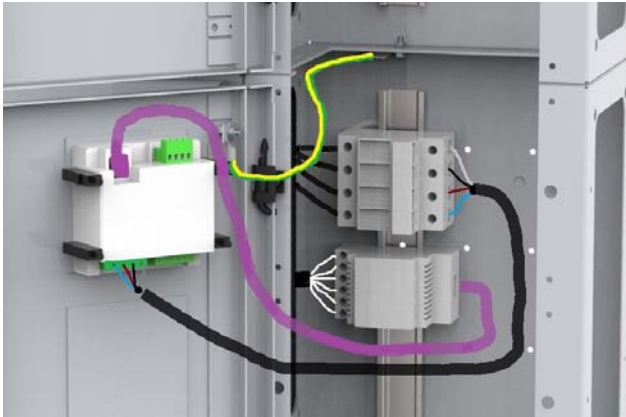
- Fit incomer interconnections, ensuring CT's are mounted correctly. P1 markings on the CTs must face the source of the supply
- Fit **LBWRPL** tap off harness to busbar interconnections & neutral bar and route cables to cableway
- Fit **LBWRCT** harness, (white numbered cables) to CT's and route cables to cableway
- Refit all shrouds
- Secure DIN rail supplied with cableway hinged meter door kit to cableway.
- Mount the fuse holders and CT adapter on to the DIN rail.
- Connect meter supply cables from connections to fuse holder
- Connect the CT cables from the CTs to the adapter ensuring connections correspond

# Installation instructions

## Dorman Smith Loadbank Metering kits



### Incomer Meter continued



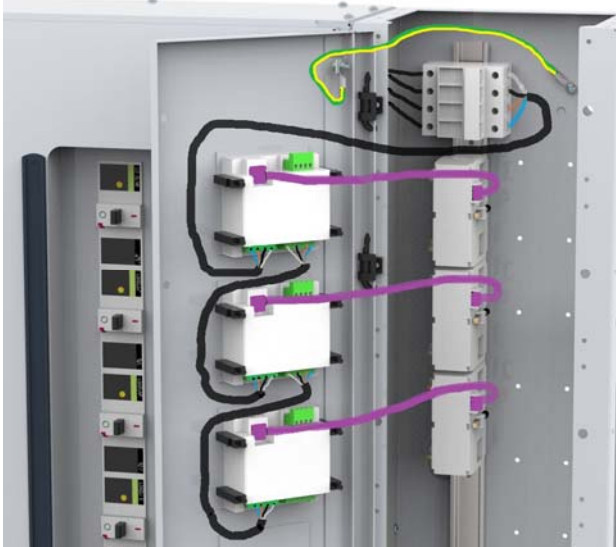
- Remove required knockout from door and mount meter
- Earth hinged door to cableway
- Connect from the CT adapter in the cableway to the meter using **TAS-RJ45CC1.00P** cable supplied with the **LBWRCT** kit.
- Connect from the fuse holder to the meter using the **TAS-F-MVSC1.00** cable supplied with the **LBWRPL** kit
- Refer to the instruction sheet supplied with the meter for set up details and additional meter information

### Outgoing Meter

**NOTE:** If an incoming meter is already fitted to the panel then a **TAS-F-MTMSCx.xx** of required length (see front page) can be used to connect to outgoing meters in the same cableway rather than using LBWRPL to tap off the top of the busbars



- Remove busbar end shroud
- Fit **LBWRPL** tap off harness to busbars & neutral bar and route cables to cableway
- If cableways with meters are required on both sides of the panel then repeat for the other cableway
- Refit busbar end shroud
- Secure DIN rail supplied with cableway hinged meter door kit to cableway.
- Mount the fuse holders on to the DIN rail.
- Connect meter supply cables from connections to fuse holder
- Mount CTs required on to DIN rail adjacent to their outgoing MCCBs



- Remove required knockouts from door and mount meter
- Earth hinged door to cableway
- Use **TAS-RJ45CC0.50P** cable (supplied separately) to connect from the CT to the meter. (Longer cables are available)
- Connect from the fuse holder to the first meter using the **TAS-F-MVSC1.00** cable supplied with the **LBWRPL** kit
- Use **TAS-F-MTMSC0.30** cables to connect between each additional meter. If meters are not in adjacent knockouts then longer cables are available (See front page)
- Refer to the instruction sheet supplied with the meter for set up details and additional meter information

While Dorman Smith Switchgear and its affiliates referenced herein have made every reasonable effort to ensure the accuracy of the information contained in this catalogue, Dorman Smith Switchgear cannot assure that this information is error free. For this reason, Dorman Smith Switchgear does not make any representation or offer any guarantee that such information is accurate, correct, reliable or current. Dorman Smith Switchgear reserves the right to make any adjustments to the information at any time. Dorman Smith Switchgear expressly disclaims any implied warranty regarding the information contained herein, including, but not limited to, the implied warranties of merchantability or fitness for a particular purpose. Dorman Smith Switchgear only obligations are those stated in Dorman Smith Switchgear Standard Terms and Conditions of Sale. Dorman Smith Switchgear will in no case be liable for any incidental, indirect or consequential damages arising from or in connection with, including, but not limited to, the sale, resale, use or misuse of its products. Users should rely on their own judgement to evaluate the suitability of a product for a certain purpose and test each product for its intended application. Dorman Smith is a trademark.