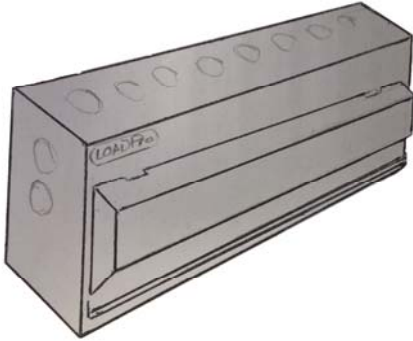


Consumer Unit for Domestic Household Premises

General Instructions



All Products must be installed by a qualified competent electrician In accordance with the current BS7671 wiring regulations.

Units to be installed in the horizontal plane only.

Installer must check the tightness of all connection screws before commissioning.

The total current supplied by the unit must not exceed the rating of the incoming Main Switch or RCCB.

This product is suitable for indoor use only.

Standards:

Consumer Unit:	BS EN 61439-3
Switch Disconnecter:	BS EN 60947-3
RCCB:	BS EN 61008-1
MCCB:	BS EN 60898-1
RCBO:	BS EN 61009-1
Ingress Protection:	IP3X

Unit Contents:

Consumer unit box, front cover/door assembly
Installation pack: (Instructions, labels, blanks)
Busbar/s

Device	Max Cable	Recommended
Main switch	50mm ²	2.5Nm
RCCB	35mm ²	2.5Nm
MCB	16mm ²	2.0Nm
RCBO	16mm ²	2.0Nm
Earth/Neutral	16mm ²	2.5Nm

Installation:

- Remove front cover/door assembly by undoing 2 fixing screws located behind the door.
- Mount the box on the wall using appropriate screws and rawl plugs.
- Bring all cable into the box through appropriate knockout and route to their final location.
- Cut and dress the main incoming terminals and earth conductor. Fit into the appropriate terminals on the incoming device and earth bar marker 'E'
- Tighten the main incoming terminals securely. Refer to chart for torque figures.
- Fit MCB/RCBO's on the DIN rail in the desired location, ensure that the retaining clip is in the lower position.
- Fit busbar/s into the lower terminals of the incoming and outgoing devices. Refer to chart for torque figures.
- For high integrity board use the fork type busbar to feed the independent circuits from the main incomer using top terminals.
- Cut, dress and connect circuit conductors to appropriate MCB, RCBO, earth and neutral terminals. Refer to chart for torque figures.
- Any unused busbar ways to be blanked off with the terminal blanks supplied. Additional terminal blanks are available if required.
- Blanking pieces to be fitted to front cover on any unused ways. Blanking pieces are available if required.
- For removal of MCB/RCBO's without removing the busbar, undo device busbar terminal screw and release device DIN rail clip using small screwdriver.
- Additional devices such as timers, contactors and meters can be fitted to the consumer unit, The incoming supply for the device must be fed from a MCB (not directly from the busbar)
- Way labels supplied in the installation pack to be positioned on the front cover as appropriate.
- After completion of the installation it is essential that it is tested in accordance with the latest edition of the IEE Wiring Regulations for Electrical